

WILLIAMS AV

CHG 863-35

863 MHz 35-unit Briefcase Charger - Europe

USER MANUAL



Safety Information

HEARING SAFETY

CAUTION!

This product is designed to amplify sounds to a high volume. To protect your hearing and the hearing of others: (1) Make sure the unit is OFF or the volume is turned down before putting on the earphones, and (2) set volume level at the minimum setting you need to hear and (3) do not allow children or other unauthorized persons to have access to this product.

BATTERY SAFETY

CAUTION!

Do not attempt to recharge alkaline or other non-rechargeable batteries, which may explode, release dangerous chemicals, cause burns, or cause other serious harm to the user or product. To reduce the risk of fire or burns, do not crush, puncture, short contacts, or expose to temperatures above 140°F (60°C). Replace only with battery types designated for this product. Recycle or dispose of properly.

MEDICAL DEVICE SAFETY

CAUTION!

Before using this product with a pacemaker or other implantable medical device, consult your physician or the manufacturer of the device to make sure that you are using this product in accordance with their safety guidelines.

Recycling Instructions

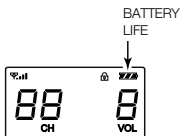
Help Williams AV protect the environment!

Please do not dispose of equipment or used batteries in the household trash. Take the equipment to an electronics recycling center or return to the factory. Take batteries to a retail or community recycling location.

Recharging Instructions

This unit will charge any combination of T2 863 transmitters and/or R2 863 receivers, up to 35 at a time, when using NiMH batteries. When the batteries are nearly depleted, the battery life symbol will have no bars (Figure A) and the display backlight will flash. You may keep using the unit until it stops operating, or recharge it as needed.

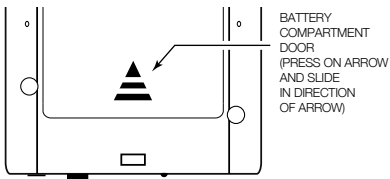
FIG. A: Battery symbol location on T2863, R2863



To recharge the unit(s):

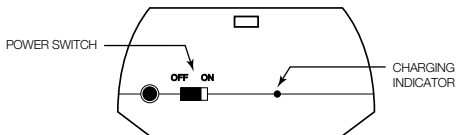
1. Ensure that the unit(s) to be charged contain rechargeable NiMH batteries. Open the battery compartment by pressing and sliding the compartment door in the direction of the arrow (Figure B).

FIG. B: Battery compartment location on T2863, R2863



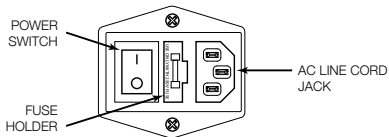
2. Turn the unit(s) off using the power switch located on the top of the unit(s). The units **need to be off** before charging. (Figure C)

FIG.C: Power switch and charging indicator on T2863, R2863



3. Insert each unit into the charger by sliding it into the slot until it stops.
4. When all of the units have been inserted, plug the charger in, and turn it on with the switch located on the side of the charger. (Figure D)

FIG.D: Power Switch, Fuse Holder, and AC Line Cord Jack



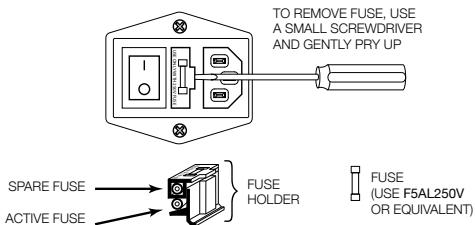
5. Charging indicator (Figure C):
When the unit begins charging the charging indicator on the unit will **flash once per second**.

If the indicator **flashes fast**, an incorrect battery type is in the unit.

When the unit is finished charging, the charging indicator will **stay on**.

6. When the units have finished charging and all charging indicators are on, you can turn the charger off with the power switch. Unplug the line cord and stow inside. The briefcase is now ready for transport.
7. To test, remove a unit from the charger, turn the unit on and verify that the battery life indicator is full (shown by the inside of the battery symbol having three diagonal lines).
 - If the charging indicator does not behave as described, or the unit does not have full battery life when it indicates it is finished charging, or the unit operates for a short time then indicates low battery, the batteries may need to be replaced.
 - When not operating the units for a long period of time (greater than one month) remove the batteries from the unit(s). Failing to do this can cause corrosion of the internal battery contacts and may damage the unit(s).
 - If none of the units are charging, or the charger indicates that it has no power (the power switch does not light up), the fuse could be blown. Remove the active fuse, and replace with spare fuse, or replace with equivalent fuse. (Figure E)

FIG. E: Changing the Fuse



System Specifications

CHG 863-35

Dimensions:	56.2 cm L x 38.1 cm W x 12.9 cm H (22-1/8"L x 15"W x 5-1/16"H) Dimensions include handle and power switch.
Shipping Weight:	5.28 kg (11.65 lbs)
Enclosure:	Aluminum, Silver Color
Power:	100-240VAC, 50-60Hz. Use line cord appropriate for country of use.
Fuse:	Use F5AL250V or equivalent.
Capacity:	Up to 35 Units can charge simultaneously.
Charging Time:	Up to 5 hours per unit
Indicators:	Charger: Power Switch glows indicating charger is on. T2863 or R2863: Charging light on top of unit Flashes once per second (Slow) = Charging, Flashes Fast = Incorrect Battery Type, On Steady = Charged
Warranty:	2 years
Approvals:	RoHS

2 Year Warranty

Williams AV, a brand owned by Williams AV, products are engineered, designed, and manufactured under carefully controlled conditions to provide you with many years of reliable service.

Williams AV warrants the CHG 863-35 against defects in materials and workmanship under normal use and conditions for up to 2 years from the date of purchase*.

Microphones, earphones, headphones, batteries, chargers, cables, carry cases, and most other accessory products carry a 90-day warranty.

This warranty does not cover reimbursement for your costs of removing and transporting the product for warranty service evaluation or installation of any replacement product provided under this warranty.

*For a Complete Warranty Statement go to: <https://williamsav.com/support/warranty-product-registration/>

NOTICE: Williams AV products are NOT designed for use in extreme temperature, humidity or chemical environments. The introduction of chemicals such as chlorine, salt water or human sweat into the product will cause damage to the circuitry. Damage due to these causes is NOT covered under the Product Warranty.

Customer Service

If you experience difficulty with your system, call Customer Assistance:

1-800-843-3544 (U.S.A.) or

+1 952 943 2252 (Outside the U.S.A.)

If it is necessary to return the system for service, your Customer Service Representative will give you a Return Authorization Number (RA) and shipping instructions.

WILLIAMS AV

info@williamsav.com / www.williamsav.com

800-843-3544 / INTL: +1-952-943-2252

©2021 Williams AV, LLC • All Rights Reserved MAN 194C