

WILLIAMSOUND

T2 863 Transmitter, R2 863 Receiver

863 MHz Portable FM Listening System - Europe

QUICK SETUP GUIDE



Safety Information

HEARING SAFETY

CAUTION!

This product is designed to amplify sounds to a high volume. To protect your hearing and the hearing of others:

1. Make sure the unit is OFF or the volume is turned down before putting on the earphones.
2. Set volume level at the minimum setting you need to hear.
3. Do not allow children or other unauthorized persons to have access to this product.

BATTERY SAFETY

CAUTION!

Do not attempt to recharge alkaline or other non-rechargeable batteries, which may explode, release dangerous chemicals, cause burns, or cause other serious harm to the user or product. To reduce the risk of fire or burns, do not crush, puncture, short contacts, or expose to temperatures above 140F (60C). Replace only with battery types designated for this product. Recycle or dispose of properly.

MEDICAL DEVICE SAFETY

CAUTION!

Before using this product with a pacemaker or other implantable medical device, consult your physician or the manufacturer of the device to make sure that you are using this product in accordance with their safety guidelines.

Recycling Instructions



Help Williams AV protect the environment!

Please do not dispose of equipment or used batteries in the household trash. Take the equipment to an electronics recycling center or return to the factory. Take batteries to a retail or community recycling location.



Battery Information

The T2 863 and R2 863 each use 2 AA batteries. We recommend using Williams Sound Alkaline batteries (BAT 001-2) or NiMH rechargeable batteries (BAT 026-2) for longer battery life than other brand batteries. NiMH batteries can be charged with a USB A to Mini-B cable using the Mini-B port on the side of the unit(s).

Accessories

To order accessories including microphones, headphones, earphones and replacement earpads, batteries, and chargers, contact Williams AV at **800-843-3544** or order on-line at: www.williamsav.com.

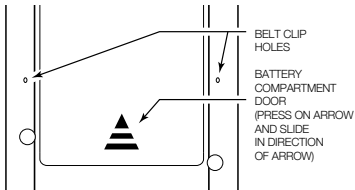
Additional Documentation

The full text of the EU declaration of conformity (or other technical documents) is available by contacting Williams AV at the following email address: regulatory@williamsav.com

Operating Instructions

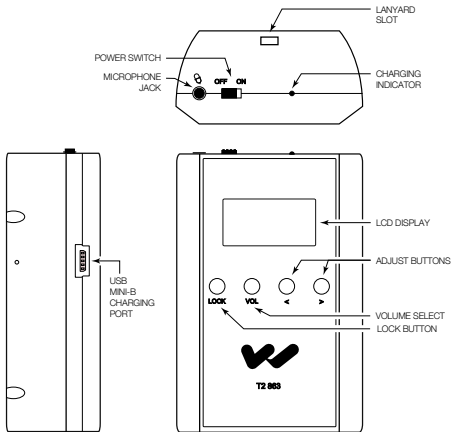
1. Open the battery compartment by sliding the compartment door away from the lanyard slot (Fig. A).
2. Install two AA Alkaline or NiMH batteries in the transmitter and receiver(s). Be sure to observe proper polarity (+/-). If using NiMH batteries, recharge with a USB A to Mini-B cable, using the charging port (Figures B, D). When the batteries are nearly depleted, the battery symbol will have no bars (Figures C, E) and the display backlight will flash; you may continue to use until the unit quits operating, then replace or recharge the batteries.

FIG. A: Battery Compartment



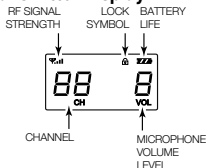
3. Plug a Williams Sound microphone into the microphone jack on the transmitter (Fig. B). Plug a Williams Sound earphone into the headphone jack on each of the receivers (Fig. D).

FIG. B: T2 863 Transmitter Top / Front



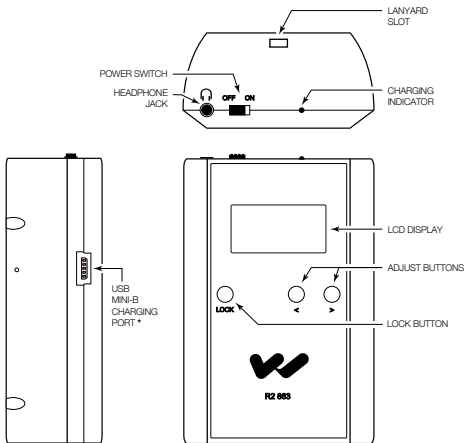
4. Power on the transmitter by sliding the power switch from “OFF” to “ON” position (Fig. B).
5. The display will light up and show the current channel, microphone volume level, transmitted RF signal strength, locked status, and battery level. (Fig. C, above)

FIG. C: T2 863 Transmitter Display



6. Select the desired operating channel on the transmitter. Push-and-hold the “LOCK” button until the lock symbol disappears. Adjust the Channel by pushing the “<” or “>” buttons. When the desired channel is reached, push and hold the LOCK button (Fig. B) until the lock symbol reappears (Fig. C).
7. To adjust the microphone volume on the transmitter, push and hold the LOCK button (Fig. B) until the lock symbol disappears, then push the VOL button repeatedly to adjust the volume between 0-3 (Figure C).
8. More than one transmitter may be used simultaneously, but must have at least two channels of separation, i.e. channels 1, 3, 5, 8. If interference is experienced, try increasing the channel separation between the two competing transmitters.

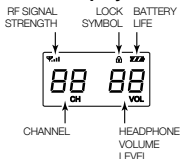
FIG. D: R2 863 Receiver Top/Front



* Requires a standard USB A to Mini-B Cable to charge

9. Power on the receiver(s) by sliding the power switch from “OFF” to “ON” position (Fig. D). The display will light up and show the current channel, headphone volume level, received RF signal strength, locked status, and battery level (Figure E).

FIG. E: R2 863 Receiver Display



10. Select the desired operating channel on the receiver (the same channel chosen in step 6). Push and hold the "LOCK" button until the lock symbol disappears, then select the channel by pushing the "<" or ">" arrow buttons. (Fig. D).
11. To adjust the volume on the receiver, at any time, push the "<" or ">" arrow buttons repeatedly. (Fig. D).
12. If no buttons are pushed for a period of time on either the transmitter or receiver, (1) the display backlight will shut off to conserve battery power, and (2) the unit re-locks itself, indicated by the lock symbol on the display.

2 Year Warranty

Williams Sound (a brand owned by Williams AV) products are engineered, designed, and manufactured under carefully controlled conditions to provide you with many years of reliable service.

Williams AV warrants the T2 863 and R2 863 against defects in materials and workmanship under normal use and conditions for up to 2 years from the date of purchase.

Microphones, earphones, headphones, batteries, chargers, cables, carry cases, and most other accessory products carry a 90-day warranty.

This warranty does not cover reimbursement for your costs of removing and transporting the product for warranty service evaluation or installation of any replacement product provided under this warranty.

*For Complete Warranty Statement go to: www.williamsav.com/warranty-statement

NOTICE: Williams Sound products are NOT designed for use in extreme temperature, humidity or chemical environments. The introduction of chemicals such as chlorine, salt water or human sweat into the product will cause damage to the circuitry. Damage due to these causes is NOT covered under the Product Warranty.

System Specifications

T2 863 Transmitter

Battery Type:	Two AA 1.5 V non-rechargeable Alkaline batteries (BAT 001-2), or Two AA 1.5 V rechargeable NiMH batteries (BAT 026-2).
Battery Life:	Alkaline: 12 hours NiMH: 11 hours
Operating Frequencies:	Selectable, 16 channels, 863-865 MHz. Non-interfering group channels (may be used simultaneously): Ch 1, 4, 8, 11, 16
Max. Carrier Power:	7.88dBm
Output Power:	10 dBm
Distance:	Up to 150 m (500 ft) Line of Sight
External Controls:	Top: Power On/Off slide switch. Front: Momentary push buttons.
Audio Input:	3.5 mm, microphone/audio
Dimensions:	75 mm x 50 mm x 25 mm
Weight:	45 g (without batteries)
Approvals:	CE, RoHS3 and WEEE
Warranty:	2 years

Hereby, Williams AV declares that the FM transmitter is in compliance with Directive 2014/53/EU and other Union harmonization as applicable.

System Specifications

R2 863 Receiver

Battery Type: Two AA 1.5 V non-rechargeable Alkaline batteries (BAT 001-2), or
Two AA 1.5 V rechargeable NiMH batteries (BAT 026-2).

Battery Life: Alkaline: 30 hours NiMH: 20 hours

Operating Frequencies: Selectable, 16 channels, 863 – 865 MHz.
Non-interfering group channels (may be used simultaneously): Ch 1, 4, 8, 11, 16

Sensitivity: -110 dBm

Distance: Up to 150 m (500 ft) Line of Sight

External Controls: Top: Power On/Off slide switch.
Front: Momentary push buttons.

Audio Output: 3.5 mm stereo/mono headphone jack

Freq Resp: 20 Hz -16 kHz

Dimensions: 75 mm x 50 mm x 25 mm

Weight: 45 g (without batteries)

Approvals: CE, RoHS3 and WEEE

Warranty: 2 years

Customer Service

If you experience difficulty with your system, call Toll-Free for Customer Assistance:

1-800-843-3544 (U.S.A.) or

+1 952 943 2252 (Outside the U.S.A.)

If it is necessary to return the system for service, your Customer Service Representative will give you a Return Authorization Number (RA) and shipping instructions.

If it is necessary to return the system for service, your Customer Service Representative will give you a Return Authorization Number (RA) and shipping instructions.

Pack the system carefully and send it to:

Williams AV

Attn: Repair Dept.

10300 Valley View Road

Eden Prairie, MN 55344

WILLIAMS AV

info@williamsav.com / www.williamsav.com

800-843-3544 / INTL: +1-952-943-2252