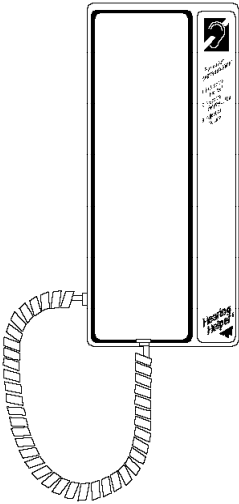
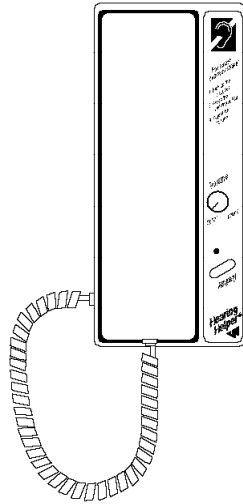


# HEARING HELPER® Intercom System

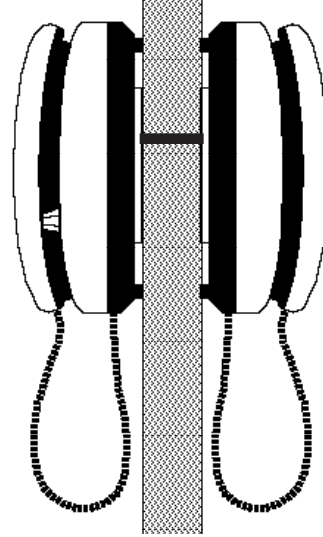
## Model HH1000



TEL 027 Service Unit



TEL 028 Customer Unit



Typical installation on a common wall

### ***Installation Instructions:***

Installation will require the following tools: center punch, drill, drill bits, screwdriver, wire stripper

#### **Step 1.**

Select a location for the customer and service units. Choose locations that are at a convenient height for use. Both units are designed for wall mounting with telephone wall plates. Use the template (FRM 380) provided to mark the location of the mounting holes for the wall plates for both the service and customer units. Also mark a hole location for the pass through wiring if the units will be mounted on opposite sides of a common wall. Surface wiring may be used if pass-through wiring is not possible.

#### **Step 2:**

Refer to the mounting template for detailed installation instructions. Mark the mounting and wiring hole locations with a center punch and drill the holes with the correct drill bit size for the fastener you will be using. Use a 1/4" hole size for the wiring. Make sure to use appropriate fasteners for the mounting surface. For a wood surface, use #6 or #8 x 1/2" round-head wood screws. For drywall or masonry, use #6 or #8 x 3/4" screws and wall-anchors.

#### **Step 3:**

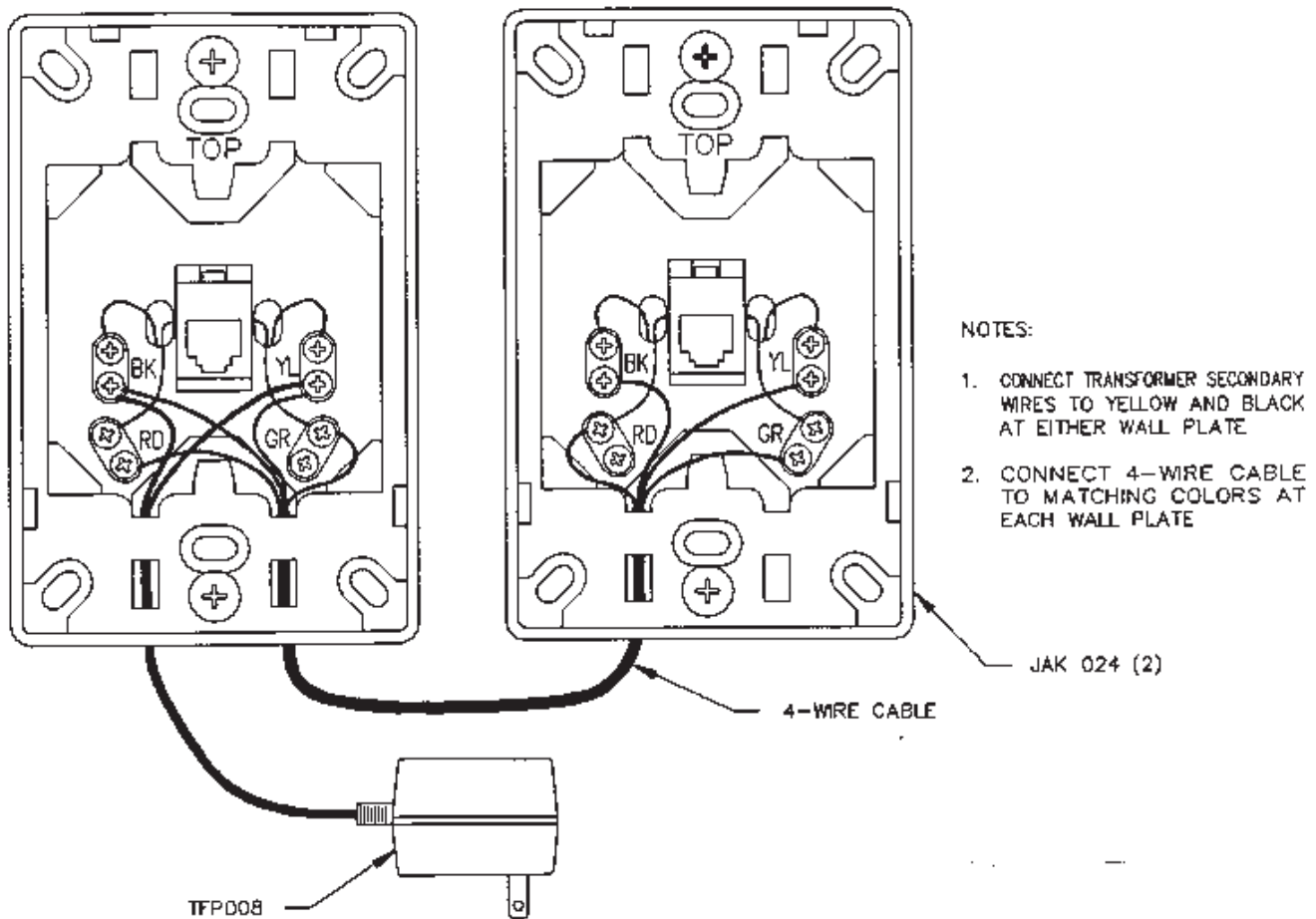
Remove the plastic covers on the wall plates to expose the wiring terminals. Pass the wiring cable through the pass-through hole and leave 6" to 8" of excess at each end. Pass the cable through hole 7 or 8 in the mounting plate and attach each wall plate to the mounting surface.

#### **Step 4:**

Strip the wires carefully and connect the wires as shown in the wiring diagram. The terminals on each wall plate should connect black to black, red to red, yellow to yellow, and green to green.

#### **Step 5:**

Connect the power supply wires to the black and yellow terminals on either wall plate. Connection to the service unit side is suggested for a neater installation.



### Step 6:

Replace the covers on the mounting plates. Insert the modular plug on the HEARING HELPER unit into the modular jack on the mounting plate. Next install the HEARING HELPER unit on the mounting plate. Repeat for the second unit.

### Step 7:

Make sure the power supply is plugged in. Have someone pick up the service unit handset while you pick up the customer unit handset. You should be able to carry on a two-way conversation. Now press the "Amplify" button on the customer unit and adjust the volume control. The volume should noticeably increase and the red LED indicator should be lit. When you hang up the handset, the indicator should go out.

### Step 8.

Instruct the customer in using the system. Operating instructions are printed on both units.

### ***In Case of Difficulty:***

1. Make sure the wiring is correct.
2. Make sure the power supply is plugged in.
3. Make sure the modular plugs are inserted into the jacks on the wall plate.

### ***Warranty:***

The HEARING HELPER Service and Customer units are warranted against defects in design and manufacture for one year. The cords and power supply are warranted for 90 days. See the enclosed Warranty Card for warranty details. Be sure to fill out and mail the Warranty Card to register your serial numbers and warranty.