



Set Up Guide & User Manual

Williams Sound Hearing Helper™
Tour Guide System, Model TGS 200
Wireless, Portable FM Listening System

Transmitter Model T1-216
Receiver Model R1-216

 **Williams Sound**®
Helping People Hear



FM TOUR GUIDE SYSTEM, MODEL TGS 200 INSTALLATION GUIDE & USER MANUAL

Contents	Page
SYSTEM OVERVIEW	4
SYSTEM COMPONENTS	5
T1-216 TRANSMITTER	
MICROPHONES	
R1-216 RECEIVER	
HEADPHONES & EARPHONES	
OPERATING INSTRUCTIONS	7
T1-216 TRANSMITTER	
R1-216 RECEIVER	
HINTS FOR USING THE SYSTEM	
BATTERY INFORMATION	10
BATTERY INSTALLATION	
RECHARGEABLE & NON-RECHARGEABLE BATTERIES	
USING OPTIONAL BATTERY CHARGERS	
IN CASE OF DIFFICULTY	12
WARRANTY	13
SYSTEM SPECIFICATIONS	14

SYSTEM OVERVIEW

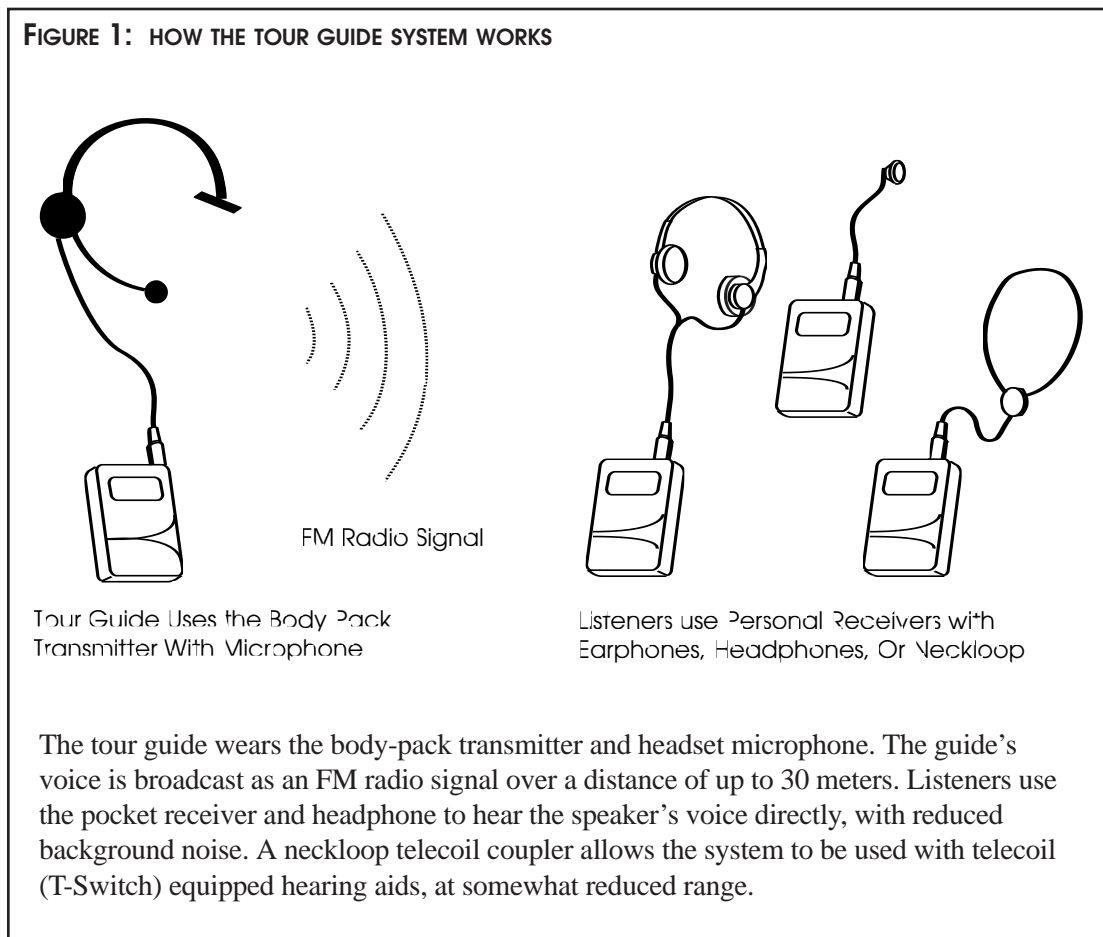
The FM Tour Guide System is a portable, high-performance, wireless system composed of the T1-216 Transmitter and R1-216 Receivers and designed for use in guided tour applications. The system allows one-way transmission of a tour guide's voice to group members using an FM radio signal. Using the system helps group members overcome background noise and distance from the person speaking.

The Tour Guide System can be used for large or small tour groups and in noisy or quiet environments.

Your Tour Guide System has two principal parts: the transmitter and the receiver. Much like a miniature radio station, the transmitter and microphone pick up the sounds you want to hear and broadcast them over an FM radio signal. The receivers and headphones are used to pick up the broadcast up to 100 meters away.

To avoid difficulties, please read through these instructions as you begin to use the system. Then save them for questions that arise as you continue to use your Williams Sound FM Tour Guide System.

If you have problems with the Tour Guide System, don't hesitate to call Williams Sound at 1-800-3286190.





SYSTEM COMPONENTS

- ▶ Body Pack Transmitter (T1-216) with (2) AA batteries (BAT 001)
- ▶ Noise-cancelling headset microphone (MIC 044)
- ▶ (6) Personal FM Receivers (R1-216) w/batteries (BAT 001) and headphones (HED 021)
- ▶ (7) Belt clip cases (CCS 001)
- ▶ Instruction Manual (MAN 093)
- ▶ System carry case (CCS 009)

THE T1-216 TRANSMITTER

The T1-216 Transmitter is a battery-powered body-pack model used with a microphone to pick up the tour guide's voice. The transmitter produces an FM radio signal to broadcast the tour guide's voice to the receiver units. A simple slide switch on top of the transmitter turns the unit on or off. The T1-216 operates on two AA non-rechargeable alkaline batteries (BAT 001), or two AA rechargeable Ni-Cad batteries (BAT 026).

MICROPHONES

A noise-cancelling, headset microphone (MIC 044) is the standard microphone. The noise-cancelling microphone helps to reduce background sounds in noisy environments. The microphone plugs into the "MIC" jack on top of the Transmitter. The microphone should be positioned directly in front of the tour guide's mouth for to achieve an optimal signal to noise ratio and so that head movement does not affect the loudness of the signal. The microphone cord acts as the transmitting antenna.

Optional Microphones

An optional Hearing Protector Headset Microphone (MIC 036) is also available for extremely high noise environments. It features ear muffs that completely cover both ears and provides 24 dB NRR of attenuation for hearing protection.

An optional Lapel Clip Microphone can be used in quieter environments like museums or galleries. The MIC 050 has an omnidirectional pick-up pattern. The MIC 056 has a directional (or cardioid) pick-up pattern, which will reduce background noise somewhat.

A small hand-held microphone (MIC 026) is also available for tour guides who prefer to hold the microphone.

THE R1-216 RECEIVER

The R1-216 Receiver is a battery-powered body-pack receiver used with a headphone to hear the signal produced by the transmitter. The receiver is pre-tuned to the transmitter and has a user-adjustable volume control. The headphone plugs into the "EAR" jack on top of the Receiver. The receiver is turned on by rotating the volume control wheel. The R1-216 Receiver operates on two AA non-rechargeable alkaline batteries (BAT 001), or two AA rechargeable Ni-Cad batteries (BAT 026).

HEADPHONES AND EARPHONES

The HED 021 Lightweight Headphone is the standard headset for the Tour Guide System. It offers excellent sound quality and wearing comfort. The foam earpads may be removed and washed in a mild detergent, rinsed thoroughly, and air dried. Replacement pads are part number HED 013.

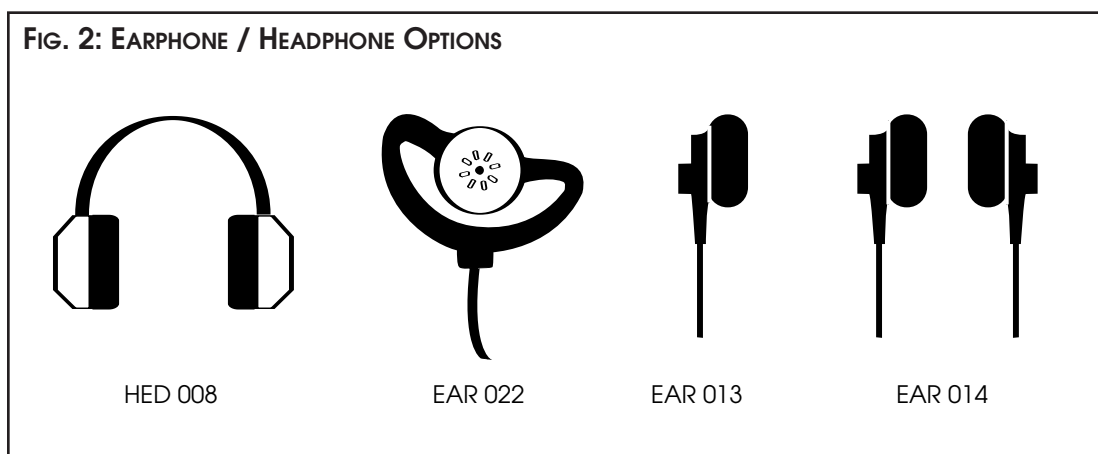
The headphone plugs into the “EAR” jack on top of the Receiver. The headphones are wired with a mono plug. If a stereo headphone is substituted, it will only work on one side of the headphone.

Optional Headphones and Earphones

The HED 008 is a heavy-duty, hearing-protector headset. The HED 008 earmuffs completely cover the ears and provide 24 dB NRR noise attenuation for hearing protection in high noise environments.

The EAR 022 Surround Earphone offers excellent sound quality in a unique style that hangs on the ear. It is easy to keep clean since the earphone does not enter the ear. It is not recommended for high noise environments.

The EAR 013 and EAR 014 are single and dual Mini Earphones. The earbud-style features a foam covering that fits in the outer ear. The foam pads can be removed for cleaning or replacement. Replacement pads are part number EAR 015-10.



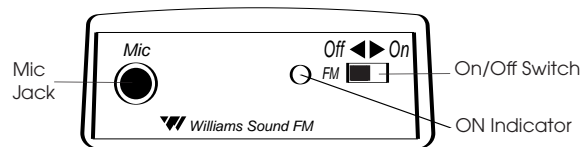
OPERATING INSTRUCTIONS

USING THE T1-216 TRANSMITTER

Note: Rechargeable batteries are shipped in a discharged state and must be charged overnight before using.

1. Make sure there are two charged AA batteries in the transmitter. If batteries are not installed, see *Battery Information* on page 10.
2. Plug the microphone cord into the “Mic” jack on top of the transmitter.
3. Place the transmitter in the belt clip case provided.

FIG. 2: T1-216 TRANSMITTER TOP VIEW



4. Turn the power switch on top of the transmitter to “On.”
5. Position the Headset Microphone boom as close to the wearer's mouth as possible without actually touching. Lapel Clip microphones should be attached to a collar or lapel, as close to the wearer's mouth as possible.

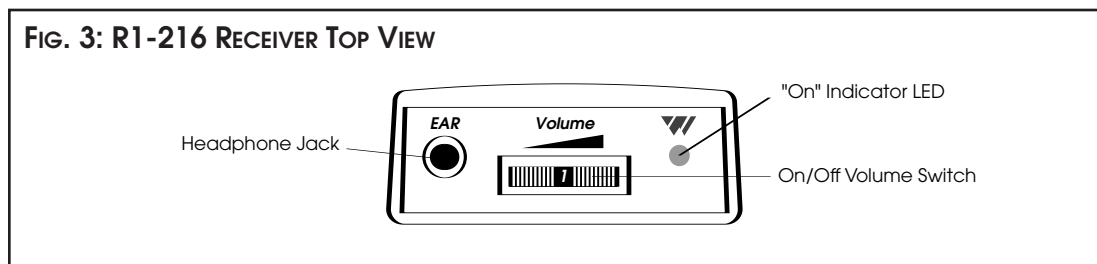
Note On The Transmitter Antenna:

The microphone cord is the transmitting antenna. Do not bunch up the cord, wrap it tightly around your body, or wrap it around the transmitter. For maximum range, the cord should hang as straight as possible. The transmitter can be placed in a pants pocket, or clipped onto a belt or waistband. Make sure the transmitter is turned OFF when not in use.

USING THE R1-216 RECEIVER

Note: Rechargeable batteries are shipped in a discharged state and must be charged overnight before using.

1. Make sure there are two charged AA batteries in the Receiver. If batteries are not installed, see *Battery Information* on page 10.
2. Plug the earphone or headphone into the “Ear” jack on top of the Receiver.



3. Place the headphones over your ears.
4. Turn the power on by rotating the volume control thumbwheel on top of the Receiver.
5. Adjust the receiver volume control to a comfortable listening level.
You should be able to hear someone speaking into the transmitter microphone.
6. Place the receiver in the belt clip case provided. The receiver can be placed in a pants pocket, or clipped onto a belt, harness, or waistband.

Note On The Transmitter Antenna:

The microphone cord is the transmitting antenna. Do not bunch up the cord, wrap it tightly around your body, or wrap it around the transmitter. For maximum range, the cord should hang as straight as possible. The transmitter can be placed in a pants pocket, or clipped onto a belt or waistband. Make sure the transmitter is turned OFF when not in use.

HINTS FOR USING THE SYSTEM

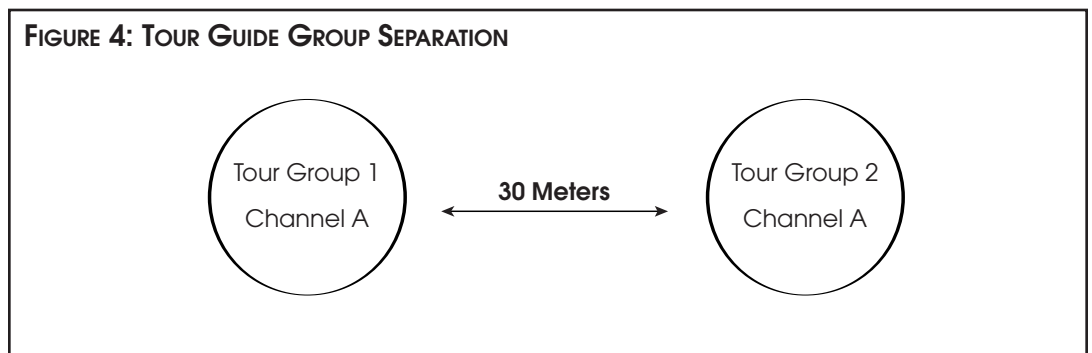
Normal operating distance between the transmitter and receiver is about 30 meters. The operating range will vary in different buildings and surroundings. In some locations, the signal may momentarily disappear. This is called a “drop-out” and is due to reflection and cancellation of the radio signal. Moving a few feet will restore the signal.

Keep the transmitter and receiver units at least a meter apart. If the transmitter gets too close to a receiver, it can overload the receiver, causing noisy reception or blocking of the signal.

Do not use more than one transmitter on the same channel (frequency) at the same time unless they are physically separated by more than 30 meters. Operating more than one transmitter on the same channel at the same time in the same place will result in interference.

USING MULTIPLE SYSTEMS FOR MULTIPLE GROUPS:

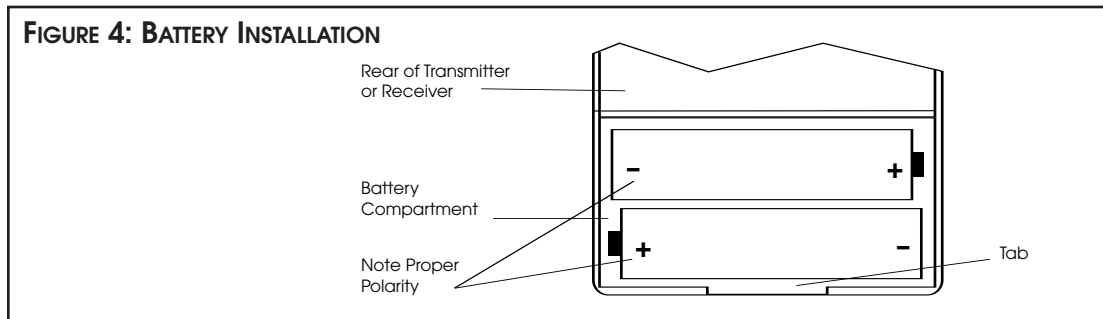
For multiple tour groups within the same facility, multiple Tour Guide Systems may be operated on the same channel at the same time by maintaining physical separation of 30 meters between groups. The physical separation of groups takes advantage of the FM capture effect which causes receivers to lock onto the closest transmitter.



BATTERY INFORMATION

INSTALLATION

Open the battery compartment using a coin in the slot in the bottom of the receiver or transmitter. Press the batteries into place, observing proper battery polarity. Incorrect insertion of the battery is difficult, and if forced, may cause both mechanical and electrical damage to transmitters or receivers not covered by the five year warranty. Units will not work with the battery incorrectly installed.



NON-RECHARGEABLE BATTERIES

In normal use, two AA 1.5 V alkaline batteries (BAT 001) will last about 8 hours in the T1-216 Transmitter and approximately 20 hours in the R1-216 Receiver. If the sound becomes weak or distorted, replace the batteries. Do not leave dead batteries in the receivers. Battery corrosion is not covered by the Williams Sound five year warranty.

RECHARGEABLE BATTERIES

The T1-216 Transmitter and R1-216 Receivers can use rechargeable AA batteries (BAT 026). On an overnight charge, these Ni-Cad batteries are designed to operate a T1-216 Transmitter for approximately 6 hours, and R1-216 Receivers for 14 hours.

The battery installed in the receiver may be recharged in the receiver only if it is a Nickel Cadmium battery, and only if a Williams Sound CHG 1600 Multi-Charger is used. Damage from improper charging is not covered by the Williams Sound five year warranty.

Important Rechargeable Battery Information

Rechargeable batteries are shipped in a discharged condition. They must be charged for a complete charge cycle before the first use (approximately 15 hours). It's best to allow Ni-Cad batteries to fully discharge before charging. Repeatedly charging the batteries after short periods of use (1-2 hours) will shorten battery life. Rechargeable batteries will need to be

!! IMPORTANT WARNINGS !!

DO NOT ATTEMPT TO RECHARGE ZINC CARBON ("HEAVY DUTY"), ALKALINE, OR LITHIUM BATTERIES!

DO NOT ATTEMPT TO RECHARGE DISPOSABLE BATTERIES! These batteries may heat up and explode, causing possible injury and damage to the equipment.

Avoid shorting the plus and minus battery terminals together with metal objects. Battery damage and burns can result!

replaced after 1-2 years of use. Do not dispose of batteries in fire. Do not open batteries - toxic chemicals inside.

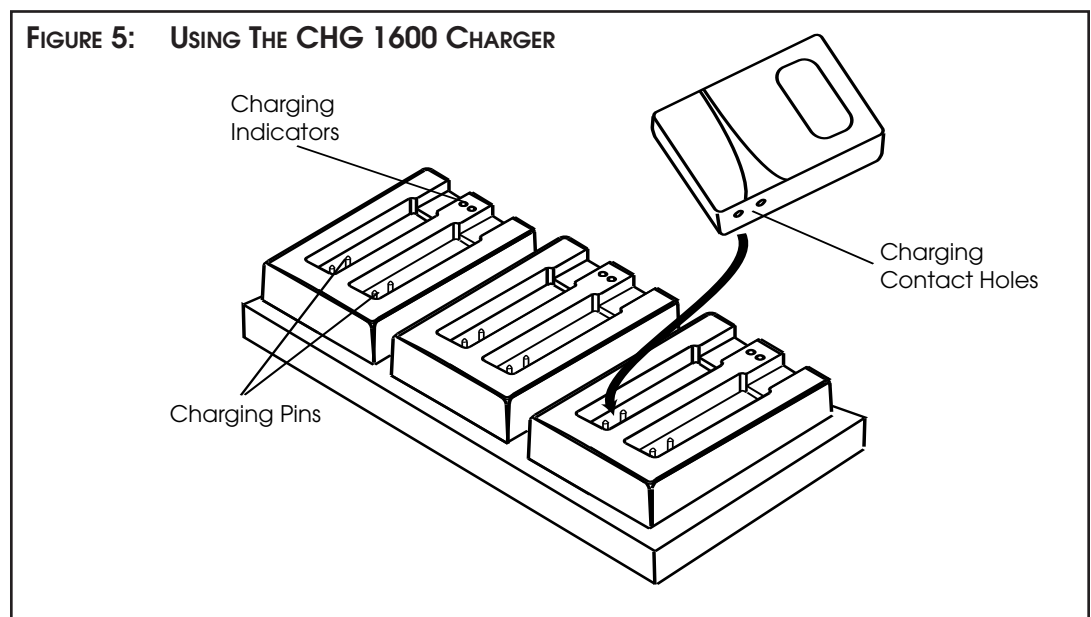
USING THE OPTIONAL CHG 1600 BATTERY CHARGER

With AC power connected, the CHG 1600 Multiple Charger operates in a “trickle charge” mode. Units can be left on trickle charge indefinitely without risk. Pressing the Overnight Charge button switches the charger to a higher-rate, overnight charge mode on a 15 hour timer. After 15 hours, the “Complete / Maintain” light will come on and the CHG 1600 reverts to trickle mode. Any time the button is pressed, the 15 hour timed charge begins again. The CHG 1600 Charger does not monitor individual unit battery state.

Charging Instructions

- Step 1: Plug the power supply into an AC wall outlet. Plug the power connector into the jack on the right side of the CHG 1600’s control panel.
- Step 2: Make sure the units you will charge are turned OFF. DO NOT attempt to charge non-rechargeable batteries.
- Step 3: Place the units in the slots so that the charging pins and the unit’s side contacts are coupled. The “CHG” indicator next to the unit will be dimly lit.
- Step 4: When all units are in place, press the red button on the CHG 1600’s control panel. The red “Overnight Charge” indicator on the CHG 1600’s control panel will light during charging, and the “CHG” indicators next to each unit will be brightly lit.
- Step 5: The CHG 1600 will charge the units for approximately 15 hours, then automatically resume a trickle charge. The “Complete/Maintain” indicator will come on.

Units may be fully charged before the green “Complete/Maintain” indicator is lit. Units may remain in the CHG 1600 Multiple Charger for more than 15 hours without harm. Williams Sound rechargeable AA batteries can be charged on a daily or less frequent basis.





IN CASE OF DIFFICULTY

If your Tour Guide System is not working, check the following:

1. Make sure the batteries are fresh or completely charged and that the “plus” and “minus” terminals are installed correctly.
2. If the rechargeable batteries will only work for a short period of time (less than 1 hour) even after they are fully charged, they must be regenerated. Leave them in the receiver or transmitter with the unit turned on, for 5 - 6 hours. Then turn receiver or transmitter off, place it in the charger, and charge for 14 - 16 hours. This should restore normal battery life. Rechargeable batteries will gradually lose their capacity over time and should be replaced every year.
3. Make sure the *microphone* is plugged into the T1-216 Transmitter and the *headphone* is plugged into the R1-216 Receiver.
4. Move the transmitter and receiver closer together. You may be out of range. When using the system indoors, it’s normal for the signal to momentarily disappear in certain locations. This is called a “drop-out.” Moving a few feet will restore the signal.
5. Do not try to use more than one transmitter on the same channel in close proximity to each other. **MORE THAN ONE TRANSMITTER ON THE SAME CHANNEL WILL RESULT IN INTERFERENCE IF THEY ARE CLOSE TOGETHER.** Keep the systems at least 50 meters apart or use separate channels for each system used.
6. If you are still hearing interference on the receivers, turn the transmitter off and listen with a receiver. If you hear the interference with the transmitter off, you need to change to a clear channel. Call your Williams Sound at 1-800-328-6190 for details.



WARRANTY

The Williams Sound Tour Guide System is engineered and designed to provide you with many years of reliable service. Williams Sound warrants it against defects in materials and workmanship for FIVE (5) years EXCEPT FOR earphones, headphones, rechargeable batteries, chargers, cables, antennas, carry cases, and all other accessory products. Accessory products carry a 90 day warranty.

If the product fails within the specified warranty period, Williams Sound will determine whether to repair or replace the defective equipment. This warranty does not apply to physical damage, abuse, mis-use, or products that have been modified.

*If you experience difficulty with your system, call for Customer Assistance:
1-800-328-6190.*

If it is necessary to return the system for service, a Williams Sound representative will give you a Return Authorization Number (RA) and shipping instructions.

Pack the system carefully and send it to:

Williams Sound Corp.
10399 West 70th Street
Eden Prairie, MN 55344-3459 USA

Phone: 800-843-3544
612-943-2252

Fax: 612-943-2174

TTY: 612-943-9675

e-mail: info@williamssound.com

Your warranty becomes effective the date you purchase your system. Your returned warranty card is our way of knowing when your warranty begins. It also gives us important information about your system including the serial number. This information will help us serve you better in the future. Please take a moment to complete and mail the attached card. Thank you.

TOUR GUIDE SYSTEM SPECIFICATIONS

FM TRANSMITTER, MODEL T1-216

Dimensions:	3-5/8" L x 2-3/8" W x 7/8" H (92.1 mm x 60.3 mm x 22.2 mm)
Weight:	4.4 oz (125 g) with battery
Color:	Neptune blue, shatter-resistant polypropylene
Battery Type:	Two (2) AA 1.5 V Non-rechargeable Alkaline batteries (BAT 001), 120 mA nominal current drain, 8 hours approx. life (OR) Two (2) AA 1.5 V Ni-Cad Rechargeable batteries (BAT 026), 120 mA nominal current drain, 6 hours per charge approx., recharges in 14-16 hours, uses CHG 200 Charger
Operating Freq's:	216 MHz, standard (??? MHz optional)
Stability:	± .005%, frequency synthesized, crystal reference, PLL
Modulation:	Narrow-band FM, 10 kHz, 100 µS pre-emphasis
RF Output:	1.5 mW typical
Freq Response:	100 to 10 kHz, ± 3 dB at 1% max. THD
Signal-Noise Ratio:	55 - 60 dB, with R1-216 Receiver
Compressor:	Compressor uses adjustable slope and noise gate
Transmit Antenna:	Integral with 40" microphone cord
Microphone:	Noise-cancelling, Headset type, 39" cord, 3.5 mm mono phone plug (MIC 044)
Controls:	On/Off switch, slide-type; "On" Indicator
Mic Connector:	3.5 mm mono phone jack

RECEIVER, MODELS R1-216

Dimensions and Weight:	3-5/8" L x 2-3/8" W x 7/8" H (92.1 mm x 60.3 mm x 22.2 mm) 4.6 oz (130 g) with batteries
Color:	Neptune blue, shatter-resistant polypropylene
Battery Type:	Two (2) AA 1.5 V non-rechargeable Alkaline batteries (BAT 001), 50 mA nom. current drain, 20 hours approx. life (OR) Two (2) AA 1.5 V Ni-Cad rechargeable batteries (BAT 026), 50 mA nominal current drain, 14 hours per charge approx., recharges in 14-16 hours, uses CHG 200 Charger
Operating Freq's:	216 MHz, standard (??? MHz optional)
FM Deviation:	Narrow-band FM, 10 kHz, 100 µS de-emphasis
AFC Range:	± 120 kHz
Sensitivity:	.5 µV at 12 dB Sinad with squelch defeated, squelches at 8 µV for min. 50 dB S/N ratio
Freq Response:	200 to 10 kHz, +2, -4 dB
Signal-Noise Ratio:	60 dB at 10 µV
Receive Antenna:	Integral with earphone cord
Audio Output:	35 mW, max. at 16 Ω
Output Connector:	3.5 mm mono phone jack
Squelch:	Set to turn off audio under weak or no signal condition
Controls:	Volume: thumbwheel/on/off/volume Indicators: On/off
Note:	Specifications are electrical performance



