

Williams AV		10300 Valley View Road Eden Prairie, Minnesota 55344		DRAWING NUMBER EFP SCW_U01		
ENGINEERING FIRMWARE PROCEDURE (EFP)					Page: 1 of 4	
TITLE: SCW_U01 (WF R1 Update Tool App) Firmware Procedure						
REVISION HISTORY						
REV	DESCRIPTION			DATE	UPDATED BY	APPROVED BY
A	Release			11/21/22	N/A	N/A
ORIGINATOR Lydia F		DATE 11/21/22	CHECKED Bob C	DATE 11/22/22	APPROVED Richard W	DATE 11/21/22

## Overview

This document is a guide for how to use the WF R1 update tool, including notes on how to overcome some possible PC setup related errors. The information presented is intended to be packaged alongside the application in a .zip file on the WilliamsAV website.

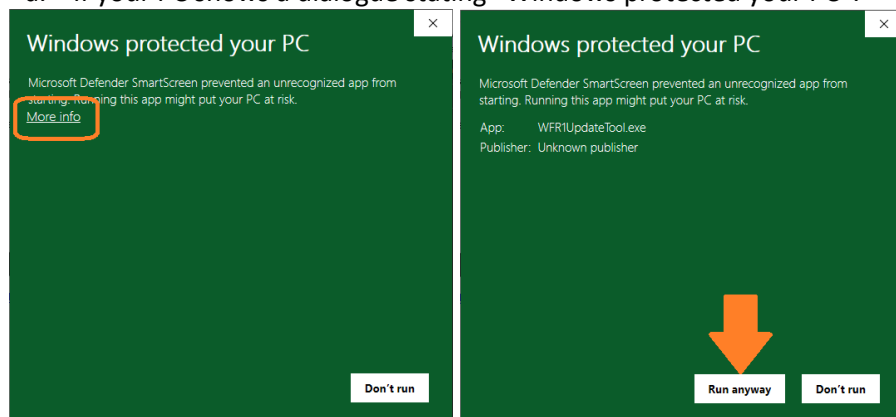
# WFR1 Update Tool User Guide

The WFR1 Update Tool is a stand-alone Windows utility provided by Williams AV designed to simplify the process of updating your WFR1 devices with the latest WaveCAST application software. Once launched, it will guide you through the steps necessary to update one or more WFR1 devices.

## I. Updating a WFR1

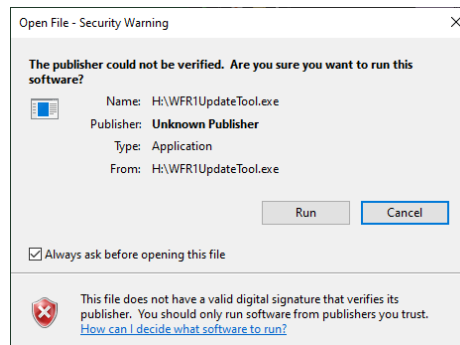
1. Turn on the WFR1 and plug it in to the PC using a USB to micro USB data cable.
2. Inside the extracted folder, next to this document, find the WFR1UpdateTool app. Make sure that the app is located on your **local drive**, Windows (C:). Double click the app to launch.
3. Your PC may present a security warning since the executable was downloaded from an online source.

a. If your PC shows a dialogue stating “Windows protected your PC”:



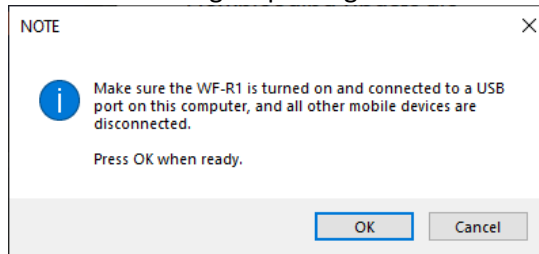
select “more info” then click the “Run anyway” option that appears, as shown above.

b. If your PC shows the following dialogue:

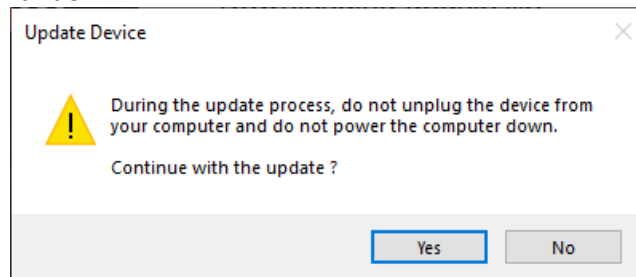


select "Run" to continue with the update.

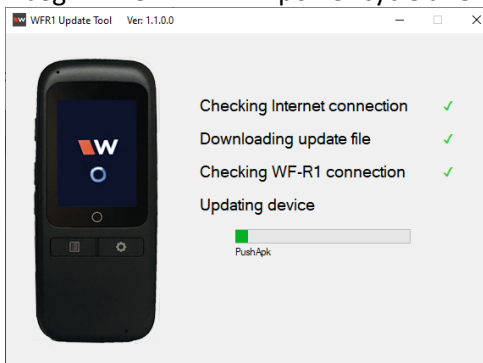
4. The following popup will appear when the update tool is ready. Once the powered on WFR1 is plugged in, select "OK". The WFR1 will begin updating.



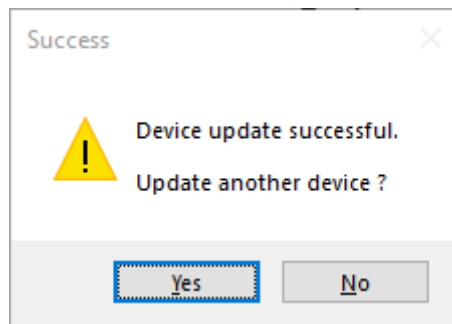
3. A warning popup will appear as a reminder to keep the device plugged in and PC turned on. Acknowledge it to continue.



4. The update process will now begin. The WFR1 will power cycle a few times during this process.

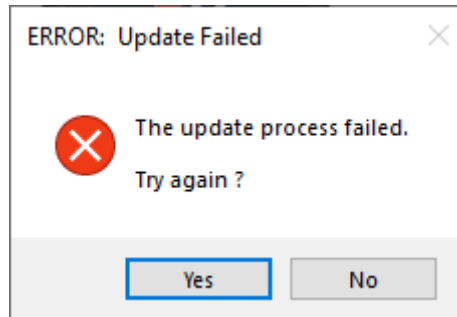


5. When the update is done, a popup will appear on screen indicating success. If updating multiple WFR1s, disconnected the current one and connect a new powered on WFR1, then select "Yes". If not updating another WFR1, select "No" to close the app.



## II. Update Failures

The utility may report a failure during the update process. If at any time an error message occurs, when asked “Try again?” select “Yes,” making sure that the device is powered on and properly connected to the computer. This should resolve any problems.



## III. Windows Security Warnings

On rare occasion, Windows Security may show a threat notice while updating a device. For example:



Should this occur, it should be considered a “false positive” and instructing Windows Security to allow the WFR1 Update Tool to continue is acceptable. To do so, click on the notification or navigate to Settings → Update & Security → Windows Security → Virus & threat protection. Under “Current threats” expand “Trojan:Script/Wacatac.H!ml” Select “Allow on device,” then press “Start actions.” For example:



You can now return to the WFR1 update tool and continue with the update.